

# PINNACLE



# PINNACLE SPECS

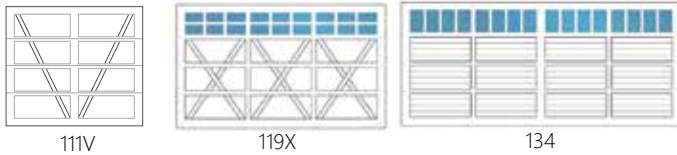
LIMITED LIFETIME WARRANTY †

## Panel Styles This is a small sampling of all available panel styles.

23/24 gauge steel or 14 gauge aluminum.



Available in steel only:



Available in aluminum only:



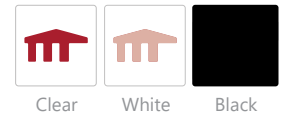
## Window Tint

Insulated glass options are available for most window types. Glass and acrylic have different tints.

### Glass/Acrylic



### Laminate



## Insulation

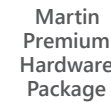
Add insulation for thermal efficiency, noise reduction, durability, and minimal upkeep.



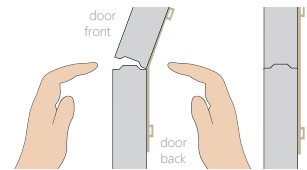
Insulated Frame Upgrade

## Hardware

Includes roller, track and accessories for a strong and lasting door system.



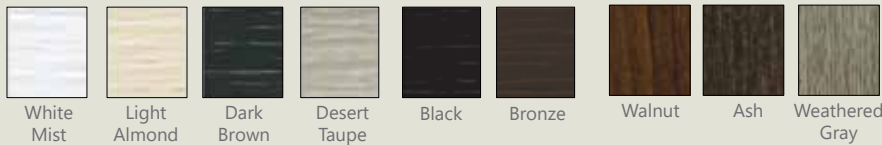
Limited Lifetime Warranty †



Full pinch-proof joint is available in steel and aluminum Pinnacle.

## Standard Colors

Long-Lasting baked-on enamel paint.

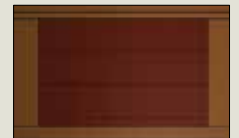


## Sample Duo-Tone Finish Option

Combine two color choices on one Pinnacle door. Choose two complementary finishes to enhance the look of your home.



Ash Wood Grain & Weathered Gray Steel



Signal Brown & Mahogany Brown

## Popular Powder Coat Finishes

Steel (embossed) or Aluminum (smooth)



Solid



Metallic



## Texture

Smooth or embossed textures are available on this door.



Embossed Steel  
Painted or Powder Coated



Smooth Aluminum  
Powder Coated

\*\*\* Please obtain physical samples before ordering. \*\*\*

† See manufacturer's written warranty for details and limitations.

CONTACT YOUR MARTIN DOOR DEALER TODAY

## Door Builder

Use your own home photo to configure a custom garage door in minutes!



2828 S 900 W, Salt Lake City, UT 84119  
1-800-388-9310  
martindoor.com

